



Challenge and innovation to be the world's best

---

# TOTAL SOLUTION PROVIDER, **ILJIN**



---

# Paving the way of innovation, we are taking on the challenge for a better future for our customers.

## Management Philosophy

---

It is our resolve to satisfy our customers with top of the line products and quality service.

## Company Motto

---

Take the initiative

## Human Resources

---

Confronting challenges through creative thinking



## Social Contributions

---

Funded the creation of a new research institute at Seoul National University which has been used as a model for industry-academy cooperation.

First university research institute established by a private enterprise.

Korea Engineering Academy of Science and Technology Iljin Award

Recognizing significant contributions to the development of engineering technology in Korea.

Iljin Science and Technology Foundation

We are cultivating dreams that will continue to advance science and technology.

---

# ILJIN Story

We have pioneered the way to localize the development and production of industrial parts and materials.

We have developed more than 90% of our production items on our own.

We are leading the global market competing against multinational corporations.

We are constantly striving to develop new technologies.

We are Korea's representative industrial parts and materials company.

We are ILJIN.





# Challenge to Excellence

Always seeking to take on the challenge of becoming a top-notch company.









# Unending Innovation

Continuously innovating for the betterment of our future











## Advancing One step at a time

It all began with passion.  
Established in 1968,  
the ILJIN Group began its mission towards the industrial development of Korea.  
The task was arduous,  
but The ILJIN family enthusiastically took on the challenge.  
As a result, we have independently developed key industrial parts and materials  
essential for our nation's industrial development.  
'ILJIN' means 'to progress towards the goal everyday'.  
As our name suggests, we will lead the way into the Fourth Industrial Revolution.  
Backed with half a century's worth of experience and craftsmanship,  
we can and will develop new technology never seen before.  
For a tomorrow that is better than yesterday -  
ILJIN will take on this challenge one step at a time.  
Innovative industrial products and services made with creativity and insight  
that will prepare us for the future.  
Thank you.

許 鎮 奎

ILJIN Group

**Chairman CHIN KYU HUH**

---

## Major Milestones

As pioneers of the industry development in Korea, ILJIN has been, from its very beginning, devoted to the development of new technology, and we are still challenging ourselves to create new growth pathways.





## How we have contributed to the revolution of Korea:

### 2000~

- 2002. 04. The industrial diamond and Elecfoil were selected as a world-class products by the Ministry of Commerce, Industry and Energy
- 2006. 01. Chairman Chin Kyu Huh selected as one of the top 60 engineers who built up Korea
- 04. Developed the world's first single LCD panel for projection
- 2008. 01. ILJIN diamonds selected as IPOL world-class product
- 12. Developed ultra-thin touch window for mobile phones
- 2012. 07. Completed construction and production of seamless steel pipe factory in Korea
- 2014. 12. Developed the first HIFU treatment device in Korea
- 2018. 01. 50th anniversary ceremony of ILJIN Group

### 1980~90

- 1982. 11. Developed Korea's first synthetic bobbin
- 1984. 09. Developed foam skin cable
- 1987. 06. Developed synthetic diamond for industrial use for the first time in Korea
- 07. Developed Elecfoil for PCB for the first time in Korea
- 08. Established Duksan Metal Co., Ltd. (Currently ILJIN Materials Co., Ltd.)
- 1988. 04. Established ILJIN Diamond Co., Ltd.
- 1990. 07. Founded the Research Institute of Advanced Materials at Seoul National University
- 1991. 01. Awarded the IR52 Jang Young Sil Award (This award is given in recognition of the best industrial technology being implemented in the country.)
- 1999. 12. Elecfoil selected as one of the top 100 technologies of Korea in the 20th century

### 1960~70

- 1968. 01. Established ILJIN Metal Industry (Currently ILJIN Electric Co.,Ltd.)
- 1969. 03. Developed of gold alloy
- 1975. 03. Developed first copper-clad steel wire in Korea
- 05. Introduced curtain wall method during the construction of exterior of buildings for the first time in Korea
- 08. Developed the first distribution brackets in Korea

## **Power Infrastructure**

ILJIN Electric, Co., Ltd.

## **Material**

ILJIN Materials, Co., Ltd.

ILJIN Diamond, Co., Ltd.

## **Components**

ILJIN Display, Co., Ltd.

ILJIN Steel, Co., Ltd.

ILJIN Hysolus

## **Architecture**

ILJIN UNISCO

ILJIN Engineering & Construction

## **Health/Media**

JTV Jeonju Broadcasting

Alpinion Medical System





# For a better tomorrow

We are committed to the development of new technologies in power infrastructure, materials, components, architecture, and healthcare in order to secure a better tomorrow.



## ILJIN Electric

---

### Korea's only Total Energy Solution

ILJIN Electric, the parent company of the ILJIN Group, is the only comprehensive heavy electronic manufacturing company in Korea that produces all the necessary electric power equipment that is the basis of national industrial development.

Our products include electric wire of various voltages from low pressure to ultra-high pressure, heavy equipment such as transformers which are essential for substations and breakers. Known as the total solution for power network configuration, we also export our products to more than 80 countries in North America, Middle East, Central and South America, etc. Not settling for the present, we have grown into a global power system company.





## Products

### Heavy Electric Machinery

Ultra High Voltage Substation Equipment, Water Distribution Equipment, Fittings, Smart Power Equipment

### Wires

High-Voltage Cables, High-Voltage Connectors, Medium-Low Voltage Cables, Insulated Wires, Spirals

### Materials

SCR, Aluminum Rods

### EPC

Transmissions, Light Rail, Eco-Friendly

## Contact

Homepage : [iljinelec.co.kr](http://iljinelec.co.kr)

2.



1. Incheon International Airport Power System
2. ILJIN Electric Factory at Hongseong
3. Ultra-high Voltage Transformers
4. ILJIN Electric Factory at Hwaseong

3.



4.



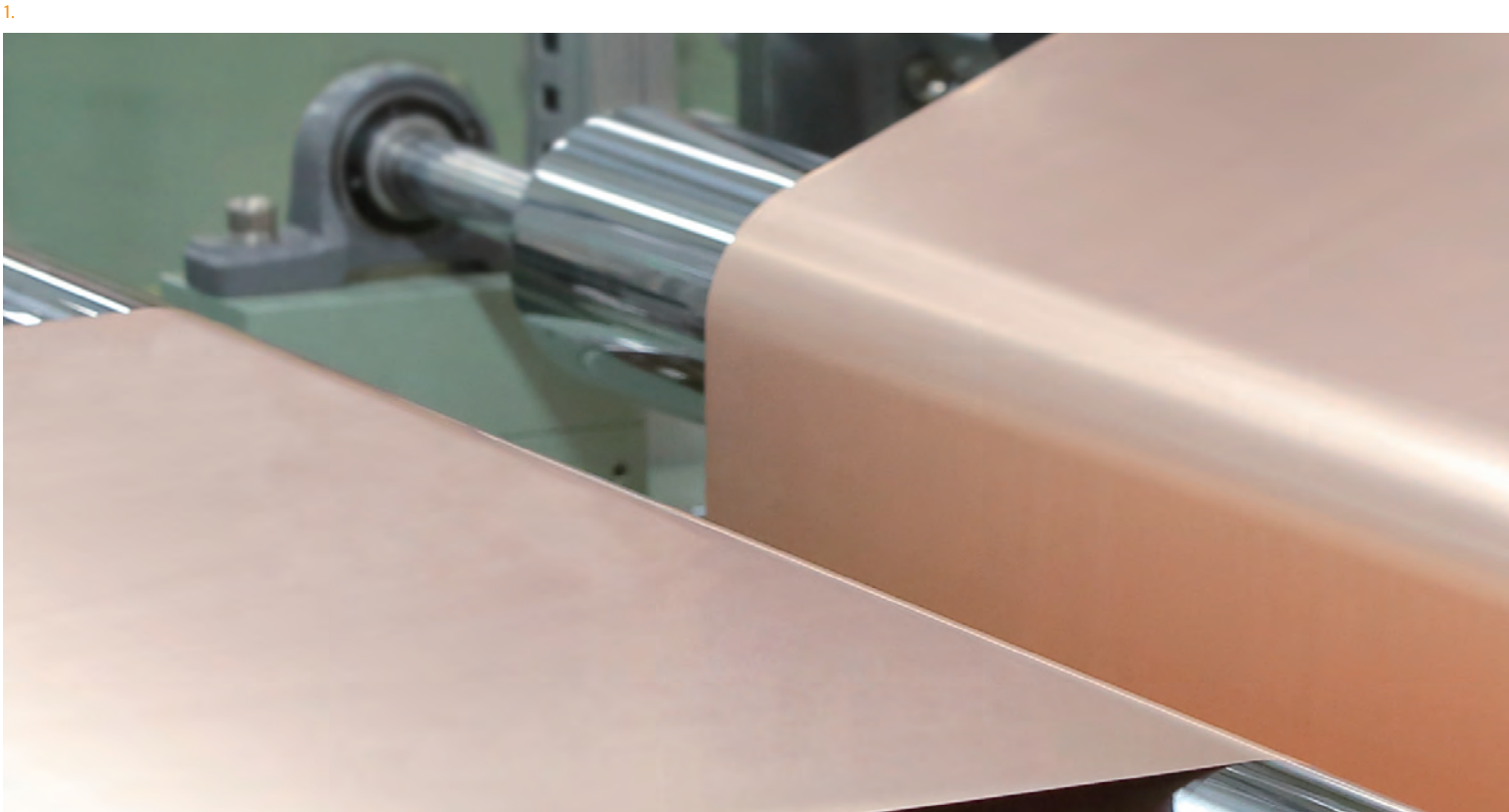


## ILJIN Materials

---

### Advanced Materials that Move the Future

ILJIN Materials, the originator of the ‘Elecfoil’, a core material for electronic products, has expanded into the rechargeable battery industry. Elecfoil, selected as one of the top five rechargeable battery materials, is now used in electric vehicles and Energy Storage (ESS) batteries allowing us to expand into green energy materials. From high-tech electronic materials to green energy materials, ILJIN Materials will continue to lead the development of rechargeable batteries.



---

## Products

### Elecfoil

I2B(Elecfoil for lithium-ion rechargeable battery),

I2S(Elecfoil for High Capacity·High Power lithium-ion rechargeable battery)

IUT(Ultra thin Elecfoil for semiconductor package substrate)

IHT(High Temperature Elongation Elecfoil for FPCB)

ICS(Elecfoil for PCB)

### Energy

LMO(Lithium Manganese Oxide)

### Contact

Homepage : [iljinm.co.kr](http://iljinm.co.kr)

1. Elecfoil

2. Electric Cars

2.



## ILJIN Diamond

---

**Leading the high-tech  
materials industry with  
uncomparable technology**

In 1987, ILJIN Diamond, in cooperation with the Korea Institute of Science and Technology, developed the first industrial diamonds used in precision machining and polishing. Since then, we have maintained our position as one of the top three world's leading diamond manufacturers using uncomparable technology. ILJIN Diamond is expanding into new high value-added markets such as automobiles, aviation, energy, semiconductors and solar power as well as construction and machinery.







1. Precision Machinery
2. Diamond Powder
3. PCD/PCBN

---

## Products

### PCD

IPOL(Polycrystalline Diamond)

### PCBN

IBON(Polycrystalline Cubic Boron Nitride)

### Diamond Powder

ISD(Synthetic Diamond),  
IPD(Premium Synthetic Diamond),  
IMD(Metal Bond Diamond),  
IRD(Resin&Vitrified Bond Diamond),  
IMP(Micron Powder), Shape Reform-Diamond

### CBN Powder

IBN, Shape Reform-cBN

### Tungsten carbide

Tungsten Carbide Rod, Tungsten Carbide Roll

### Diamond Wire

### PDC

Polycrystalline Diamond Compact

## Contact

Homepage : [iljindiamond.co.kr](http://iljindiamond.co.kr)

2.



3.







## ILJIN Display

### Leading IT Industry Global Leader in IT Parts

ILJIN Display's touch screen panel division is leading the smartphone and tablet PC market with its capacitive touch screen panel and force touch technology. We are exploring new markets by expanding the application of our technology to flexible/foldable devices, household appliances, battlefield vehicles, and other industrial uses. The Sapphire Division produces sapphire ingots, which are essential for the LED industry, and custom sapphire wafers, which are applied to cover glass and windows for special semiconductor equipment.

#### Products

##### Touch Screen Panel

Touch Screen,  
Force Touch,  
Biometrics,  
Flexible/Foldable Touch Screen

##### Sapphire

Ingot, LED & Micro-LED Display,  
Mobile Cover, Machine Window

#### Contact

Homepage : [iljindisplay.co.kr](http://iljindisplay.co.kr)



1.

1. ILJIN Display Factory at Pyeongtaek

2. Touch Screen Panel



2.









## ILJIN Holdings

---

### Paving the way for a sustainable future

Established in July, 2008, ILJIN Holdings was created to improve the brand value of ILJIN. We are continuously masterminding new strategies for continuous growth of our core businesses such as energy, advanced materials and medical equipment, and to discover new avenues for expansion.

---

#### Major Subsidiary Companies

ILJIN Electric, ILJIN Diamond, Alpinion Medical System,  
Jeonju Broadcasting, ILJIN D&CO, ILJIN Hysolus







## ILJIN Steel

### First in the nation in Seamless Steel Pipe Development

ILJIN Steel manufacturer of specialized steel pipes (PIPE), developed synthetic fiber bobbins, which were entirely imported from overseas, using only domestic technology. ILJIN Steel has propelled the textile industry of Korea forward with its synthetic bobbin with high precision and durability. Since then, we have expanded our range of molds using precision machine technology and accurate drawings of steel pipes. In 2012, we developed the seamless steel pipe for the first time in Korea giving us wider recognition to our brand name.

#### Products

OCTG,  
Power Generation,  
Line Pipe,  
Mechanical Tube,  
Automotive,  
Stainless Tube,  
Precision Cold Drawn Shape

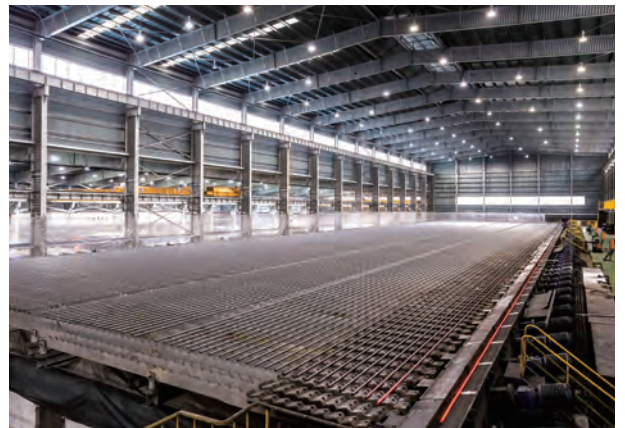
#### Contact

Homepage: [iljinsteel.com](http://iljinsteel.com)

1.



2.



1. 2. ILJIN Steel Factory at IMSIL

3. Oil Well

4. Hydraulic Cylinder

5. Part of Automobiles

3.



4.



5.



## ILJIN Hysolus

### A specialized enterprise leading the way to an eco-friendly society

ILJIN Hysolus specializes in the design, development and production of advanced composite materials. We manufacture fuel tanks for environment-friendly vehicles, diesel particulate filters (DPF), and simultaneous reduction devices that reduce fine dust and nitrogen oxides. More specifically, our technology produces hydrogen fuel tanks, which are core components of hydrogen electric vehicles that make for a more environment friendly society.

1. Hydrogen vehicles(FCEV)
2. CNG tanks
3. Fuel Cell Electric Vehicle(FCEV)
4. Hydrogen fuel tanks



1.

3.



2.

4.



#### Products

##### Composite high pressure tanks

Lightweight composite CNG tanks,

Ultra lightweight composite material hydrogen tanks

#### Contact

Homepage: [hysolus.co.kr](http://hysolus.co.kr)



## ILJIN UNISCO

### Using the finest technology for creating a more beautiful city

In 1975, ILJIN UNISCO was the first company in Korea to introduce the Curtain Wall construction method using the most advanced architectural interior and exterior materials. The 3D Curtain Wall method, unique to ILJIN UNISCO, embodies the curved surface of the outer wall of buildings. Our technology has been recognized as it has not only been used in the design and construction of several high-rise buildings in the country, but in overseas construction in North America, Australia, and Southeast Asia. We have demonstrated the capabilities of 'Korean Architecture'.

1. Dongdaemun Design Plaza (DDP)
2. GT Towers

#### Business Introduction

##### Curtain Wall

Non-load-bearing walls made from metal materials, glass, stone and PANEL outside the building structure to prevent wind and rain damage and to block out noise and heat.

##### Contact

Homepage: [iljin-unisco.co.kr](http://iljin-unisco.co.kr)



## ILJIN Engineering & Construction

---

### Builders of peaceful and comfortable space

Backed with the technology and know-how in various fields such as civil engineering, architecture, landscape, and industrial environment, we, at ILJIN Engineering & Construction, pride ourselves in building special spaces with the comfort and enjoyment of our customers in mind.

---

#### Business Introduction

##### Civil Engineering Division

Road and highway construction, bridges, and harbor construction

##### Architecture Division

Designing all types of architecture from office buildings, educational and community facilities to social infrastructures incorporating our customer's ideas with our cutting-edge technology.

##### Industrial Environment·Plant Division

Construction of infrastructures that help our environment, including sewage treatment plants, natural drainage pumping stations.

##### Landscape Architecture Division

Creating space that combines convenience and aesthetics that blend people and nature together.

##### Electrical Division

Completing industrial and construction environments with the best electrical systems

#### Contact

Homepage: [iljinco.co.kr](http://iljinco.co.kr)





## JTV Jeonju Broadcasting

### Creating cultural value Comprehensive multimedia company

JTV Jeonju Broadcasting, which launched in 1997, focuses on community-based programming broadcasting the lives of local residents in Jeonbuk, Korea. Our programs aim to present objective and balanced public opinions, and provide a variety of programs of various cultural contents to satisfy all our viewers.





1.



2.

1. Ultrasonic diagnostic
2. HIFU therapy(ALPIUS 900)

## Alpinion Medical System

### Specializing in ultrasonic medical devices, we are contributing to healthy lives

We are a specialized medical equipment company that manufactures diagnostic imaging devices, therapeutic ultrasound devices (HIFU), and transducers with our own developed ultrasonic technology. Alpinion Medical System operates an ultrasonic application research institute in Seattle, USA to develop the world's best ultrasound technology and has established local corporations in Europe, USA and China to compete with our global competitors.

#### Products

##### Imaging Platform

FleXcan™ Architecture, Optimal Imaging Suite™

##### Transducer

Crystal Signature™, MicroFit™ Technology, SensitiView™ Technology

##### HIFU(High-Intensity Focused Ultrasound)

ALPINION with HIFU

#### Contact

Homepage: [alpinion.co.kr](http://alpinion.co.kr)







## Global ILJIN

## Beyond Korea and into the world!

## ILJIN Holdings

## Seoul Office

45, Mapo-daero, Mapo-gu, Seoul, Korea  
T. +82-2-707-9337 F. +82-2-707-9698

## ILJIN ELECTRIC

## Hwaseong 1st Plant

905-17, Mannyeon-ro, Hwaseong-si, Gyeonggi-do, Korea  
T. +82-31-220-0500 F. +82-31-220-0519

## Hwaseong 2nd Plant

905-64, Mannyeon-ro, Hwaseong-si, Gyeonggi-do, Korea  
T. +82-31-220-0913 F. +82-31-220-0909

## Hongseong Plant

467, Sandan-ro, Galsan-myeon, Hongseong-gun, Chungcheongnam-do, Korea  
T. +82-41-413-3000 F. +82-41-631-9860

## Ansan Plant

21, Neungan-ro, Danwon-gu, Ansan-si, Gyeonggi-do, Korea  
T. +82-31-8085-7700 F. +82-31-491-1210

## Seoul Office

45, Mapo-daero, Mapo-gu, Seoul, Korea  
T. +82-2-707-9114 F. +82-2-707-9778

## ILJIN Materials

## Seoul Office

45, Mapo-daero, Mapo-gu, Seoul, Korea  
T. +82-2-707-9060 F. +82-2-707-9294

## Iksan Plant

63-25, Seogam-ro 3-gil, Iksan-si, Jeollabuk-do, Korea  
T. +82-63-835-3616 F. +82-63-835-3620

## Samgi Plant

11, Sandangupyeong-gil, Samgi-myeon, Iksan-si, Jeollabuk-do, Korea  
T. +82-63-730-4710 F. +82-63-730-4717

## ILJIN Diamond

## Seoul Office

45, Mapo-daero, Mapo-gu, Seoul, Korea  
T. +82-2-707-9026 F. +82-2-707-9089

## Eumseong Plant

157, Daegeum-ro, Daeso-myeon, Eumseong-gun, Chungcheongbuk-do, Korea  
T. +82-43-879-4800 F. +82-43-879-4888

## Ansan Plant

15, Jinheung-ro 10beon-gil, Danwon-gu, Ansan-si, Gyeonggi-do, Korea  
T. +82-31-689-5100 F. +82-31-495-5659

## ILJIN Display

## Pyeongtaek Plant

18, Cheongboksandan-ro 99beon-gil, Cheongbuk-eup, Pyeongtaek-si, Gyeonggi-do, Korea  
T. +82-31-680-0112 F. +82-31-680-0129

## Eumseong Plant

157, Daegeum-ro, Daeso-myeon, Eumseong-gun, Chungcheongbuk-do, Korea  
T. +82-43-879-4747 F. +82-43-879-4877

## ILJIN Steel

## Seoul Office

45, Mapo-daero, Mapo-gu, Seoul, Korea  
T. +82-2-707-9700 F. +82-2-707-9706

## Hwaseong Plant

905-80, Mannyeon-ro, Jeongnam-myeon, Hwaseong-si, Gyeonggi-do, Korea  
T. +82-31-220-6901 F. +82-31-220-6906

## Imsil Plant

1746, Hoguk-ro, Imsil-eup, Imsil-gun, Jeollabuk-do, Korea  
T. +82-63-730-4585 F. +82-63-714-2030

## Busan Office

257, Hakgam-daero, Sasang-gu, Busan, Korea  
T. +82-51-711-7817 F. +82-51-315-6906

## ILJIN Hysolus

## Wanju Plant

97-46, Wanjusandan 5-ro, Bongdong-eup, Wanju-gun, Jeollabuk-do, Korea  
T. +82-63-263-1700 F. +82-63-261-2500

## Hwaseong Plant

905-17, Mannyeon-ro, Hwaseong-si, Gyeonggi-do, Korea  
T. +82-31-220-0872 F. +82-31-220-0879

## ILJIN UNISCO

## Seoul Office

333, Yeongdong-daero, Gangnam-gu, Seoul, Korea  
T. +82-2-6353-0114 F. +82-2-6353-0100

## Icheon Plant

46, Jeungsinsin-ro 325beon-gil, Icheon-si, Gyeonggi-do, Korea  
T. +82-31-637-8050

## Dangjin Plant

522, Bodeokpo-ro, Godae-myeon, Dangjin-si, Chungcheongnam-do, Korea  
T. +82-41-352-0600 F. +82-41-352-0093

## ILJIN Engineering &amp; Construction

## Seoul Office

333, Yeongdong-daero, Gangnam-gu, Seoul, Korea  
T. +82-2-3452-3791 F. +82-2-3452-3792

## Yongin Office

30, Heungdeok 1-ro, Giheung-gu, Yongin-si, Gyeonggi-do, Korea  
T. +82-31-213-2680 F. +82-31-624-5877

## Alpinion Medical System

## Anyang Office

77, Heungan-daero 81beon-gil, Dongan-gu, Anyang-si, Gyeonggi-do, Korea  
T. +82-2-3282-0903 F. +82-2-851-5593

## JTV Jeonju Broadcasting

## Jeonju Office

1083, Jeongyeorip-ro, Deokjin-gu, Jeonju-si, Jeollabuk-do, Korea  
T. +82-63-250-5200 F. +82-63-250-5249





**ILJIN EUROPE GmbH**

Mergenthaler Allee 23/25, 65760, Eschborn,  
Germany

TEL : +49-6196-88759-0

FAX : +49-6196-88759-20

**Alpinion Medical Deutschland GmbH**

Lilienthalstrasse 17a, D-85399 Hallbergmoos  
Tel +49-811-99-82-860



**SHANGHAI ILJIN Diamond China Co., LTD.**

3F-C, BaoNa B/D(LP Tower), No25, XianFeng ST.,  
MinHang District, ShangHai, China, 201103

TEL : +86-21-61268711

FAX : +86-21-61268713

**Alpinion GuangZhou Medical systems Co., Ltd.**

#1302, Victory Plaza No.103 Tiyu, West Road,  
TianHe District  
Tel +86-20-3867-8286



**ILJIN USA INC.**

11999 Katy Freeway Suite 605, Houston, Texas  
77079, USA

TEL : +1-281-448-5111

FAX : +1-281-448-5114

**ILJIN Electric USA, INC.**

11999 Katy Freeway Suite 605, Houston, Texas  
77079, USA

TEL.+1-832-300-3339

**Alpinion USA, Inc.**

21312 30th Drive SE Ste 100, Bothell, WA 98021  
Tel +1-425-949-4900W

**ILJIN STEEL USA, INC.**

11757 Katy Freeway Suite 130, Houston, TX 77079, USA

TEL.+1-281-679-1526

FAX : +1-281-687-9101



**ILJIN JAPAN**

Hamamatsucho General B/L 7F, 2-2-15, Hamamatsu-  
cho, Minato-ku, Tokyo, 105-0013, Japan

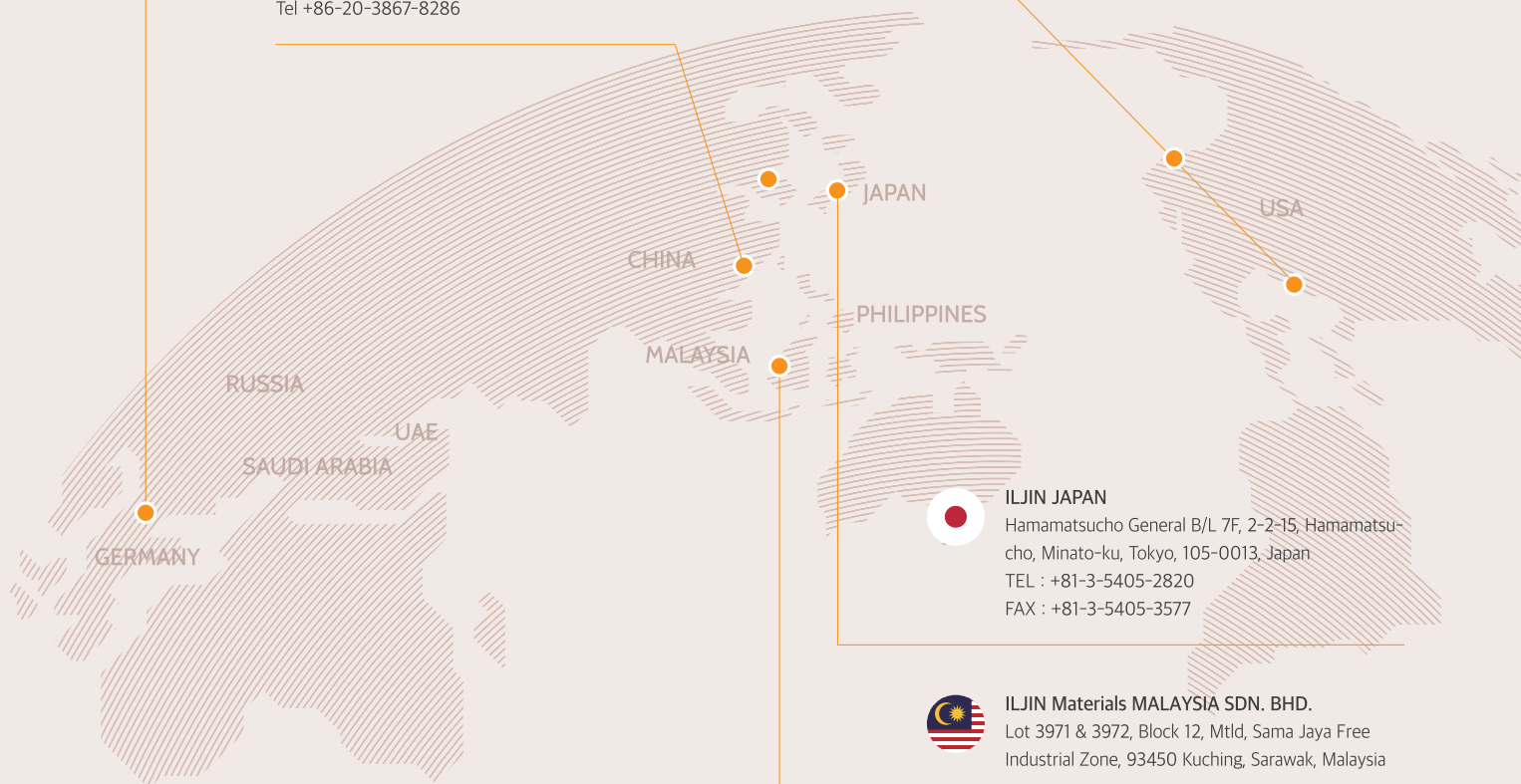
TEL : +81-3-5405-2820

FAX : +81-3-5405-3577



**ILJIN Materials MALAYSIA SDN. BHD.**

Lot 3971 & 3972, Block 12, Mtld, Sama Jaya Free  
Industrial Zone, 93450 Kuching, Sarawak, Malaysia







ILJIN's Advanced Technology,  
illuminating the Korean Peninsula

Core technology of Electric Automobile,  
powering journeys running through the blue earth

ILJIN Precision Technology,  
enabling smart mobile life

Pride of Core Technology,  
implementing deep-sea oilfield development

Innovations in Ultrasonic Medical Technology,  
empowering diagnosis and treatment

Leader in Three-Dimensional Architecture and Construction,  
adding beauty of cities

The challenge for a better future  
continues for ILJIN.



ILJIN Building  
45 Mapo-Daero, Mapo-Gu, Seoul  
TEL. +82.2.707.9114

<https://www.iljin.co.kr>